

The background image shows an industrial interior. A large, white overhead crane with the word 'Hiper' on its side is suspended from the ceiling. Below it, a metal staircase with a handrail leads upwards. The floor is a reddish-brown color. On the left, there is a white door with a brass frame. The overall scene is brightly lit by overhead lights.

tps

HYGIENIC SOLUTIONS

INSULATED
PANEL SYSTEMS

tps
360

SURFACES FOR ALL PURPOSES

A COMPLETE SOLUTION
TO ALL CONTROLLED
ENVIRONMENT APPLICATIONS

TPS Hygienic Solutions' controlled environment insulated panel systems are designed for use within temperature controlled and hygiene safe environments such as: food processing; deep freeze; cold/chill store; and clean rooms for biotechnology and pharmaceutical industries. These firesafe, hygienic and fibre-free insulated panel systems are suitable for internal and external walls, roofs and ceilings, including internal 'box within a box' applications, with a fabric-first approach using high performance insulated and air tight panel systems.

TPS has an experienced design and installation team to meet all your controlled environment requirements including walls, doors, access panels, ceilings and structures.

Installers of:



eurobond



TPS' KS1100 CS Controlled Environment panels have exceptional technical performance and are available in a range of thicknesses, making them perfect for use in a range of controlled environments. This insulated panel system can be laid vertically or horizontally, making it suitable for internal or external wall and roof applications. We also provide a modular system designed for the creation of the precise environments required in controlled test chambers, and with industry leading air tightness levels our customers can be assured of complete peace of mind.

Typical applications:

Food • Pharmaceutical • Medical • Biotechnology • Cold Storage • Controlled Testing



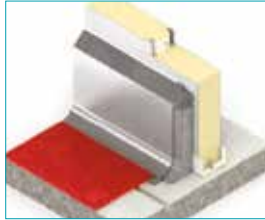
ChillZone

A ChillZone by definition is a “temperature controlled” environment and generally used for the short-term storage of perishable products within the food manufacturing industry. These products are held at 0°C to +5°C in order to maintain their quality and safety to ensure they do not pose a health risk.



ColdZone

Much like a ChillZone, a ColdZone by definition is also a “temperature controlled” environment, but one that is held at between -40°C and 0°C. ColdZones are used for the preservation and long-term storage of perishable and heat sensitive items within the food processing, biotechnology and pharmaceutical industries.



FoodZone

Unlike ChillZones and ColdZones, a FoodZone requires a higher temperature and hygiene-safe environment of +10°C to +18°C, and is used for the preparation, production and processing of food. The insulating properties of TPS' KS1100 CS panel systems means it is ideal for use in all controlled environments and not just those of extreme temperature.



Resin Flooring



Construction



Polished Concrete



Insulated Panel Systems



Surface Preparation



Specialist Coating Solutions



Unit E, 26 Sir Alfred Owen Way
Pontywindy Industrial Estate, Caerphilly, CF83 3HU

Unit 38, Nine Mile Point Industrial Estate
Cwmfelinfach, Newport, Gwent, NP11 7HZ

T: 03450 268 780 (Option 2) E: sales@tps360.co.uk W: www.tps360.co.uk

 @TPS_360

 total-protective-solutions-360-ltd



Designed and printed by
www.horizondml.co.uk



Printed on demand to minimise waste, upon 100% post consumer recycled paper, using chemical free environmentally friendly processes.